




 Bivio simmetrico in lamiera per sdoppiare tubi flessibili e inserirsi direttamente nella bocchetta con pinza GRNG-160100.


 Metal Y piece for flexible hoses to be directly inserted in the GRNG-160100 rubber nozzle.

 Déviation symétrique pour tuyaux flexibles avec prédisposition pour le raccord direct avec l'entonnoir GRNG-160100.


 Y-Stück für Schläuche und Direktverbindung mit Gummitrichter GRNG-160100.


 Desvío en Y para mangueras y conexión directa al boquerel en goma GRNG-160100.

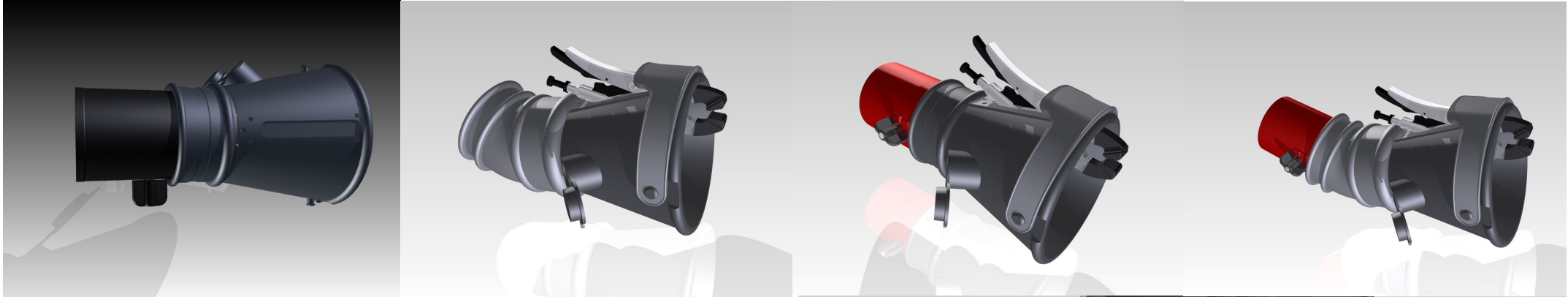
 Bocchetta in metallo con ingresso sonda da 20 mm per prova opacimetrica e maniglia con palette di chiusura a molla.

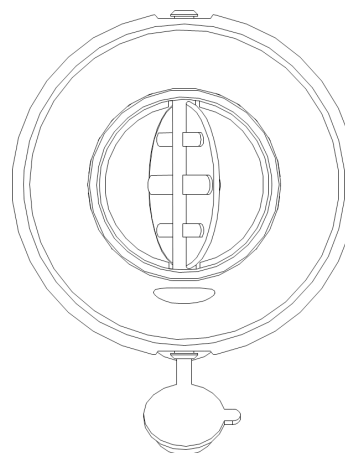
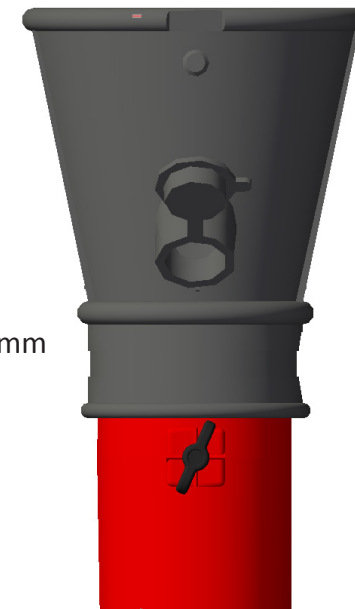
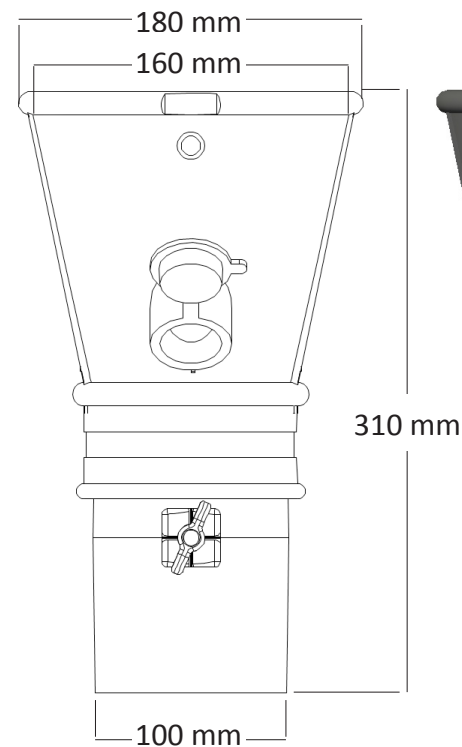
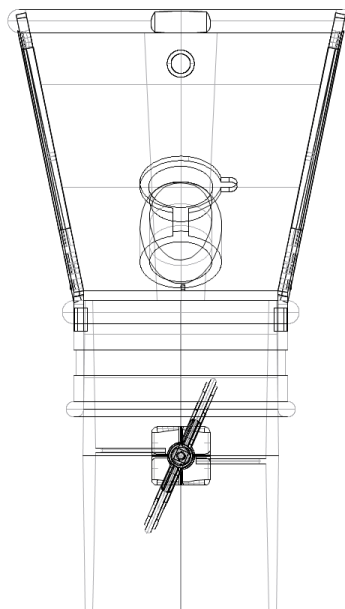
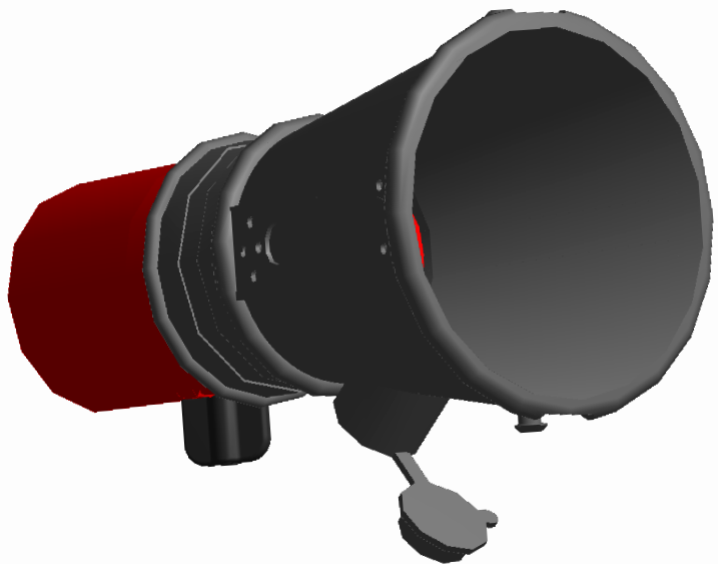
 Metal nozzle with 20 mm intake for C.O. test and spring closing flap with handle.

 Entonnoir en acier avec clapet de fermeture et prise C.O. de 20 mm

 Stahltrichter mit Klappe und C.O Sondeanschluss (20 mm)

 Boquerel en acero con tapa cierre y toma de 20 mm para sondas.





Bocchetta in gomma con ingresso per sonda C.O.



Rubber nozzle with opening and intake for C.O. probe



Entonnoir en caoutchouc avec prise pour sonde CO.



Gummitrichter mit Öffnung für AU Sonde



Boquerel en goma con ingreso para sonda C.O.

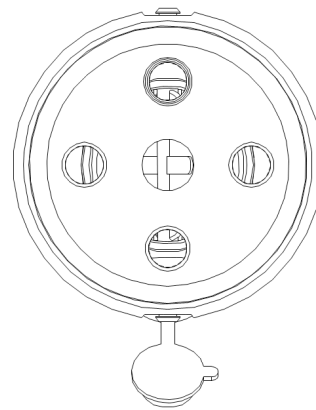
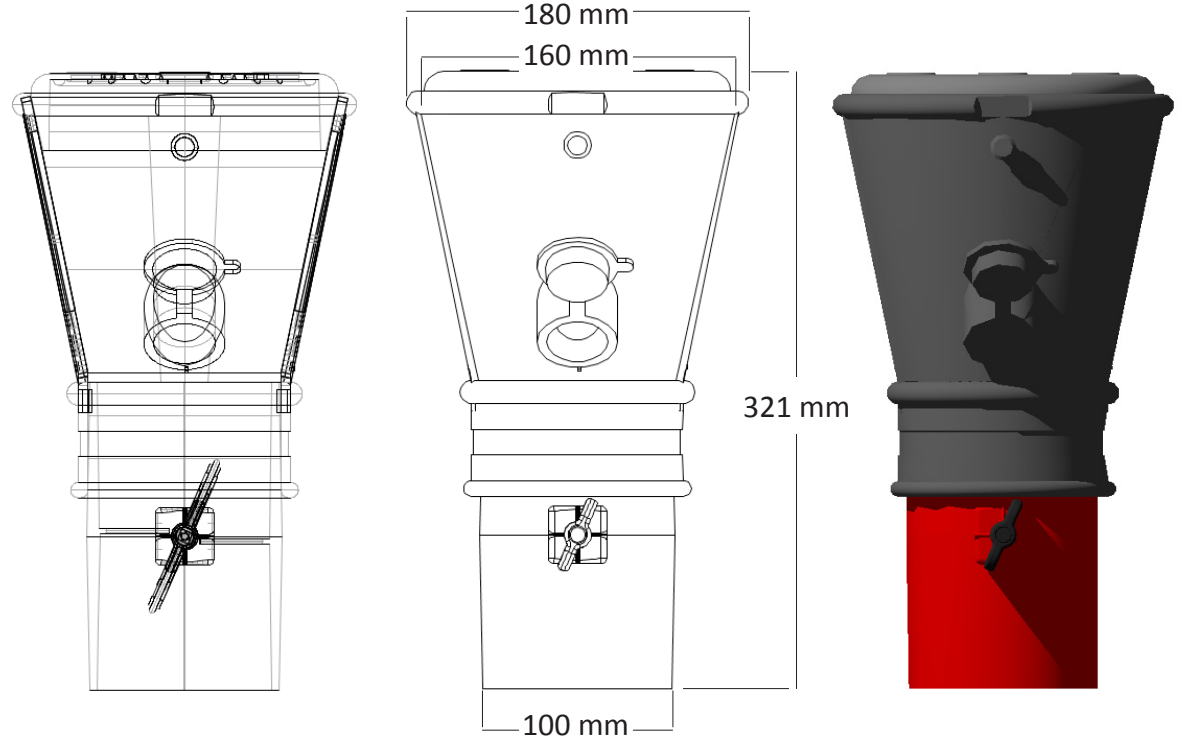
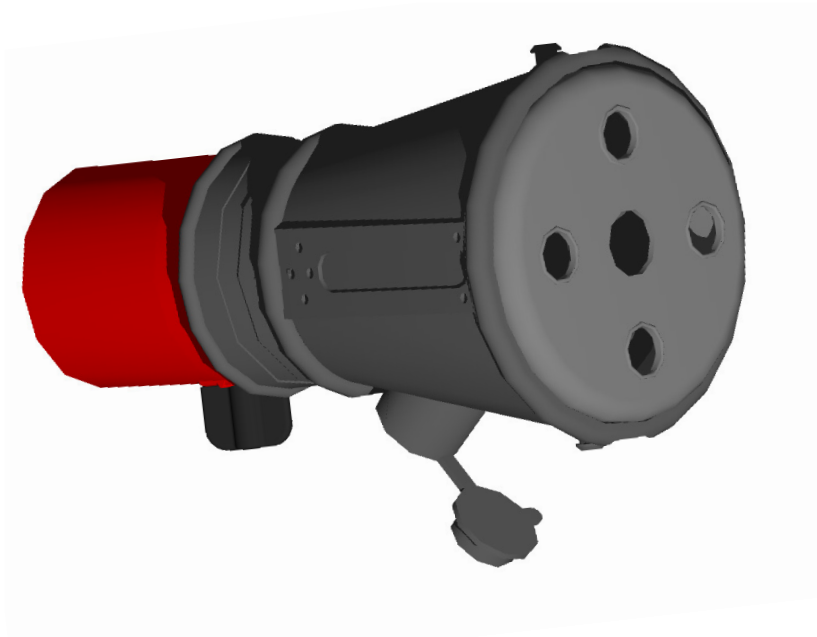
	Ø1 mm	Ø2 mm	
GRN-16075	160 mm	75	-
GRN-160100		100	✓
GRN-160125		125	-

Materials


Rubber NBR - 80 shore


polypropylene reinforced with glass fiber


additional metal plates in connection to the gripper or clip






 Bocchetta in gomma con ingresso per sonda C.O. e tappo in silicone

 Rubber nozzle with opening with intake for C.O. probe and silicon cap

 Entonnoir en caoutchouc avec prise pour sonde CO. et bouchon en silicone

 Gummitrichter mit Öffnung für AU Sonde und Silikon-Deckel

 Boquerel en goma con ingreso para sonda C.O. y tapón de silicona

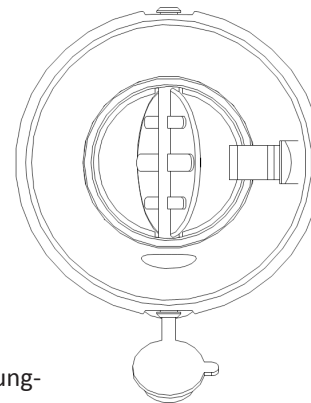
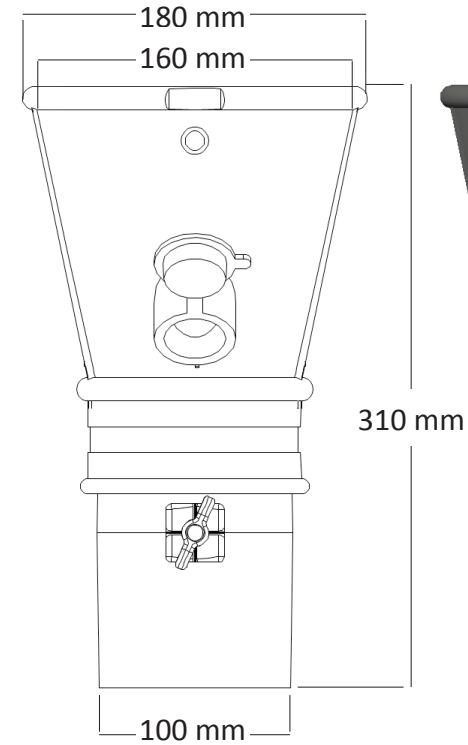
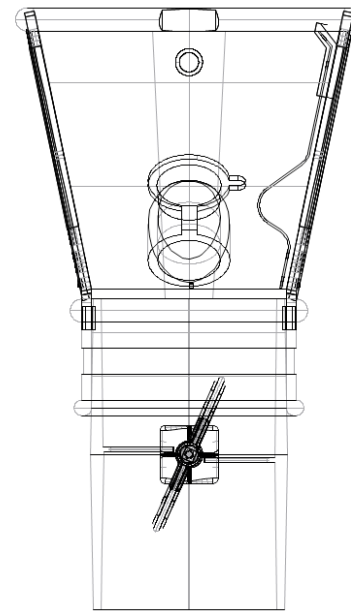
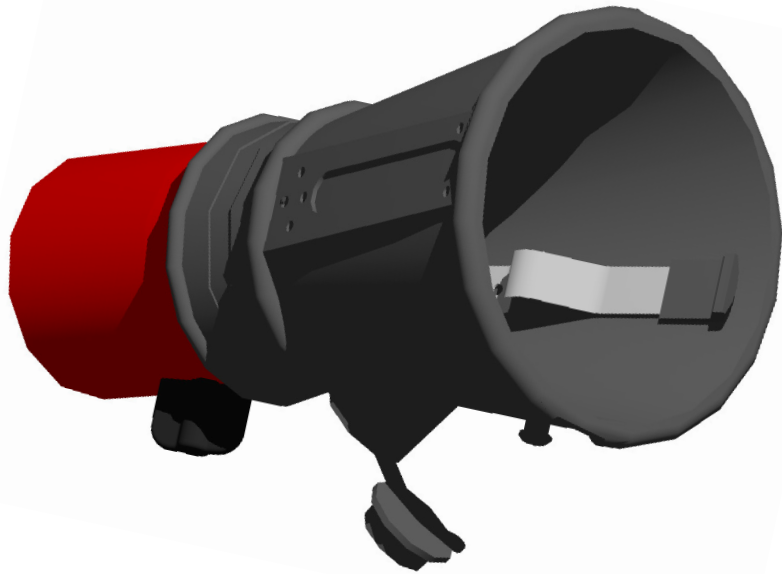
	Ø1 mm	Ø2 mm		
GRNT-16075	160 mm	75	-	✓
GRNT-160100		100	✓	✓
GRNT-160125		125	-	✓

Materials

Rubber NBR - 80 shore

polypropylene reinforced with glass fiber

additional metal plates in correspondence with the gripper or clip



Bocchetta in gomma con ingresso per sonda C.O. e clip di fissaggio in acciaio armonico con terminale in gomma vulcanizzata



Rubber nozzle with opening and intake for C.O. probe and harmonic steel fixing clip with vulcanized rubber end





Entonnoir en caoutchouc avec prise pour sonde CO.



Gummitrichter mit Öffnung für AU Sonde und Stahlfixierung-Klemmvorrichtung mit vulkanisiertem Gummischutz



Boquerel en goma con ingreso para sonda C.O. y clip de fijación en acero harmónico con terminal en goma vulcanizada

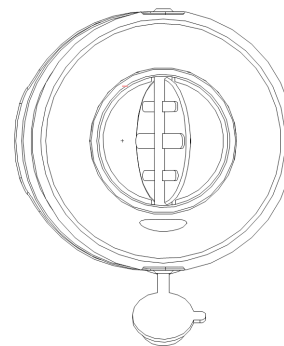
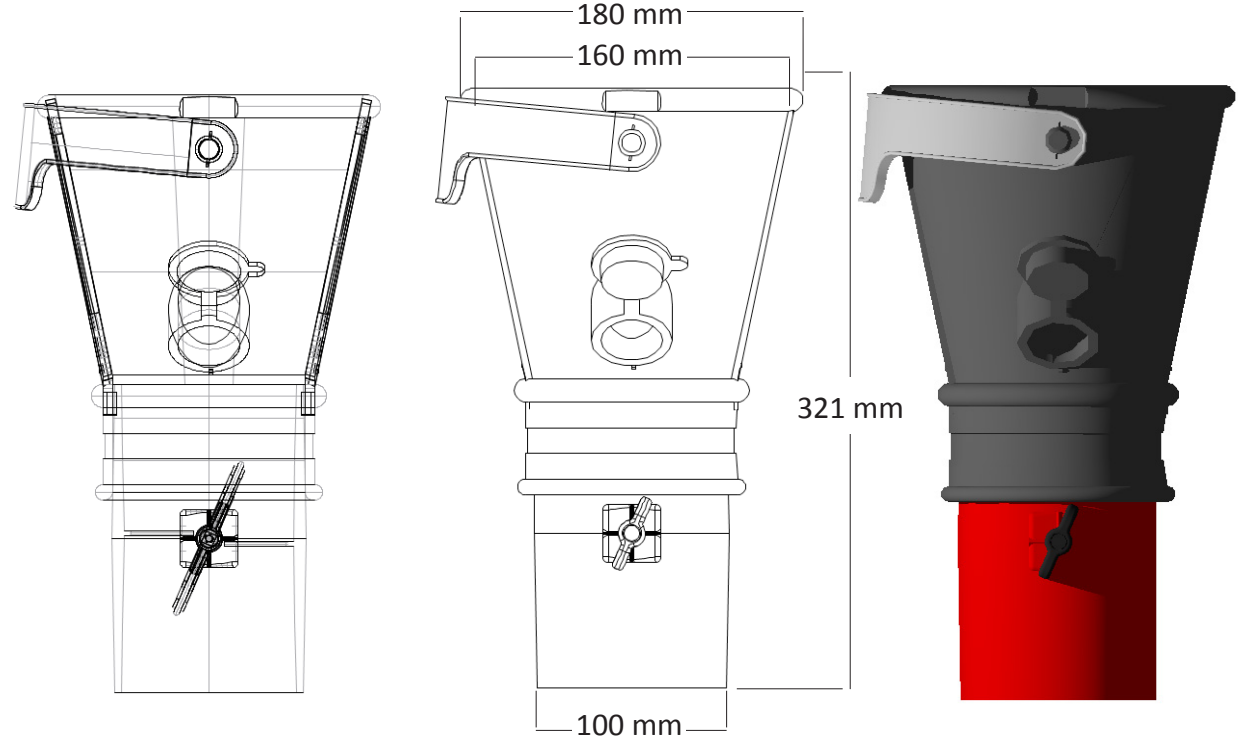
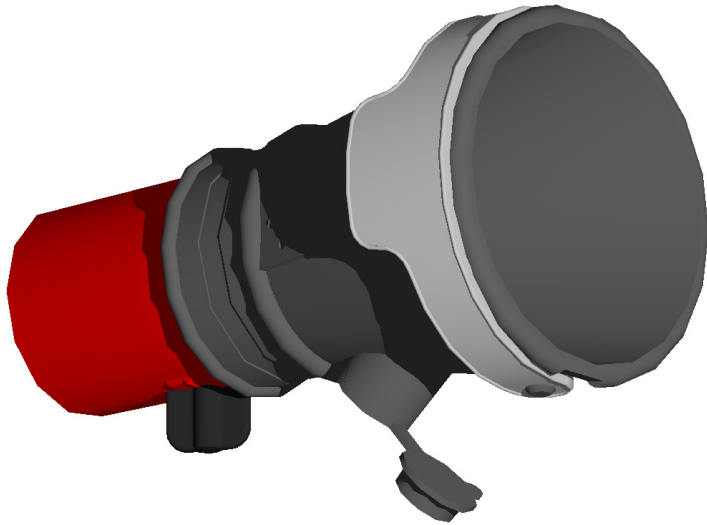
	Ø1 mm	Ø2 mm		
GRNK-16075	160 mm	75	-	✓
GRNK-160100		100	✓	✓
GRNK-160125		125	-	✓


Materials


Rubber NBR - 80 shore


polypropylene reinforced with glass fiber


additional metal plates in correspondence with the gripper or clip






 Bocchetta in gomma con ingresso per sonda C.O. e maniglia in silicone per una sicura e facile movimentazione

 Rubber nozzle with opening with intake for C.O. probe and silicon handle for easy and safe handling

 Entonnoir en caoutchouc avec prise pour sonde CO. et prise en silicon

 Gummitrichter mit Öffnung für AU Sonde und Silicongriff für einfache und sichere Anwendung

 Boquerel en goma con ingreso para sonda C.O. y agaradera de silicona para un manejo simple y seguro

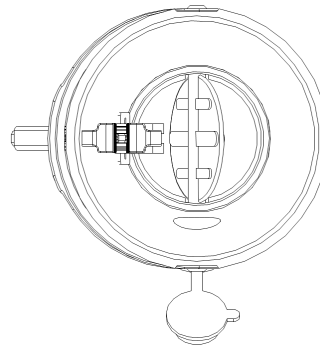
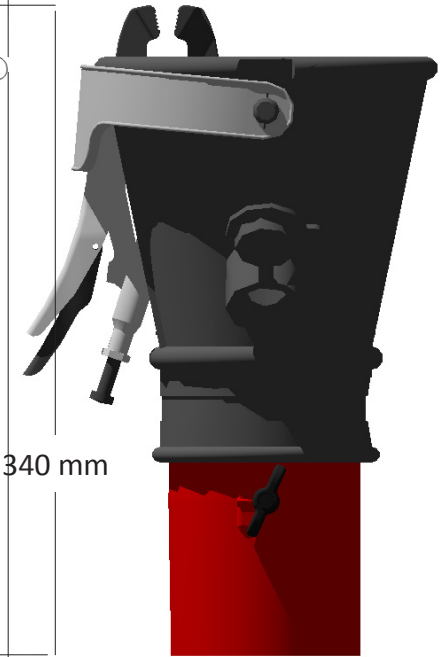
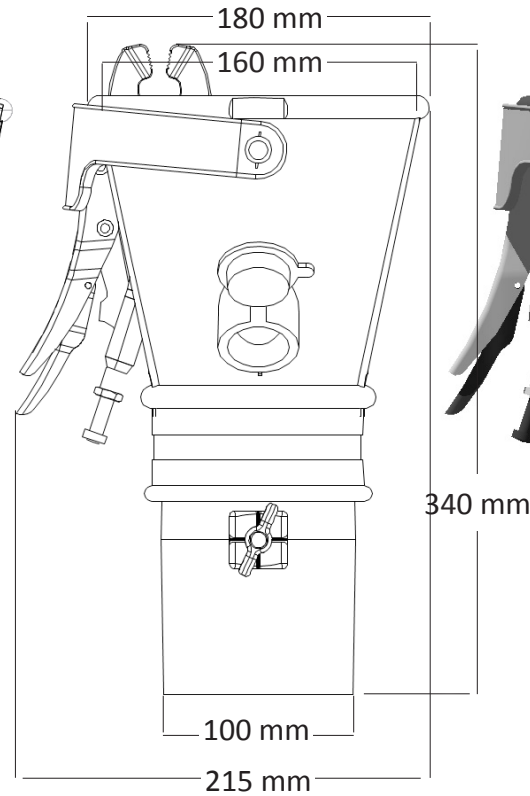
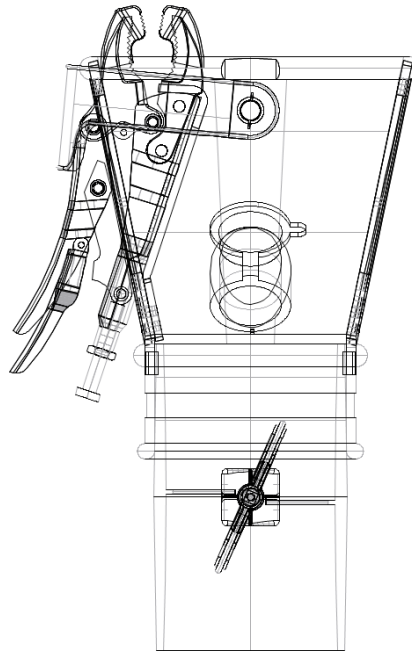
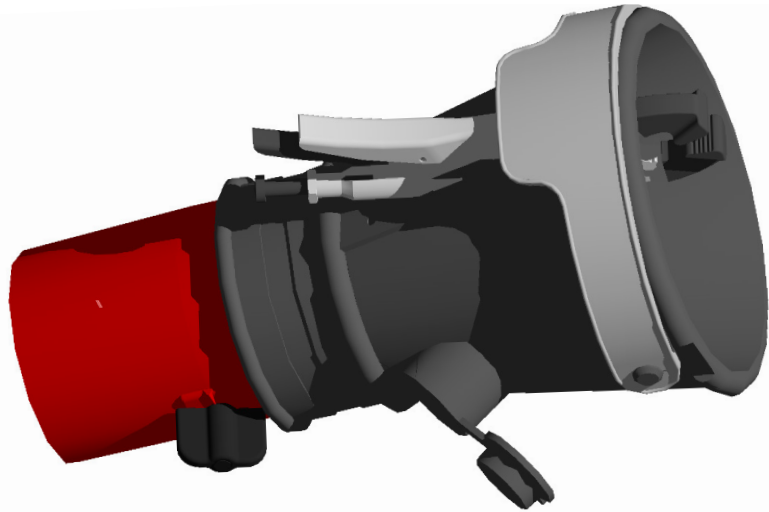
	Ø1 mm	Ø2 mm		
GRNM-16075	160 mm	75	-	✓
GRNM-160100		100	✓	✓
GRNM-160125		125	-	✓

Materials

Rubber NBR - 80 shore

polypropylene reinforced with glass fiber

additional metal plates in correspondence with the gripper or clip



Bocchetta in gomma con ingresso per sonda C.O., maniglia in silicone e pinza grip con rostri coperti da gomma vulcanizzata



Rubber nozzle with opening with intake for C.O. probe, silicon handle and gripper with clamps covered by vulcanized rubber



Entonnoir en caoutchouc avec ouverture pour sonde CO, prise en silicone et pince étau recouverte en caoutchouc vulcanisé.



Gummitrichter mit Öffnung für AU Sonde, Silicongriff und Klemmzange mit Gummi-Abdeckung



Boquerel en goma con ingreso para sonda C.O., agarradera de silicona y pinza cubierta de goma

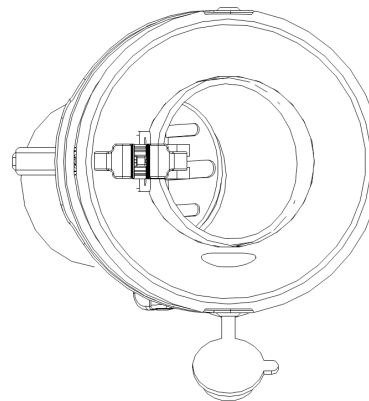
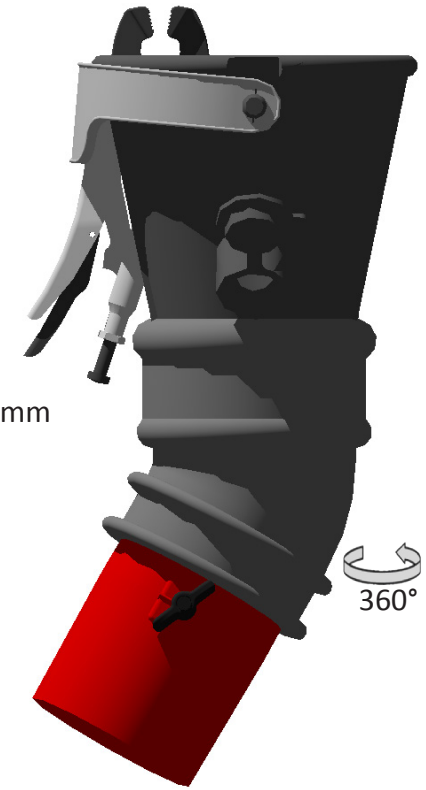
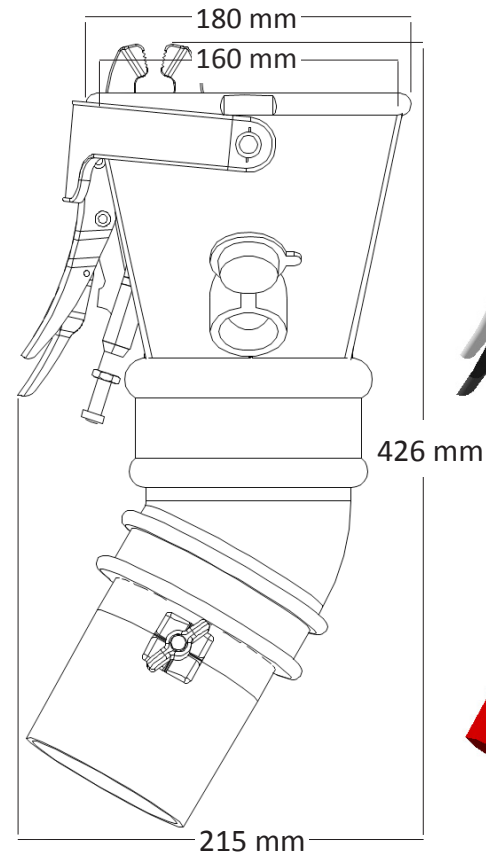
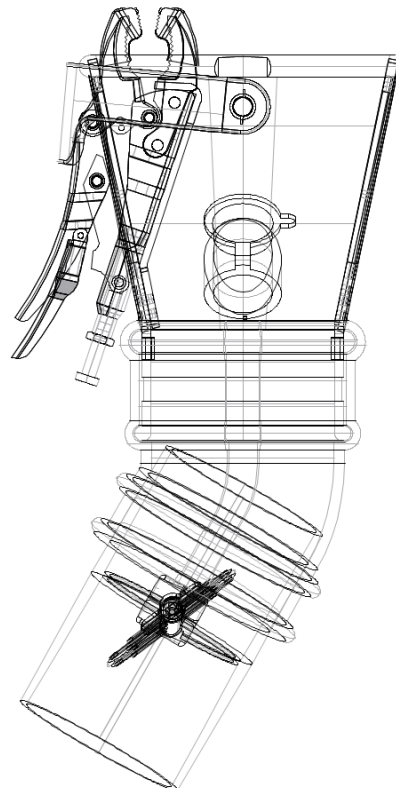
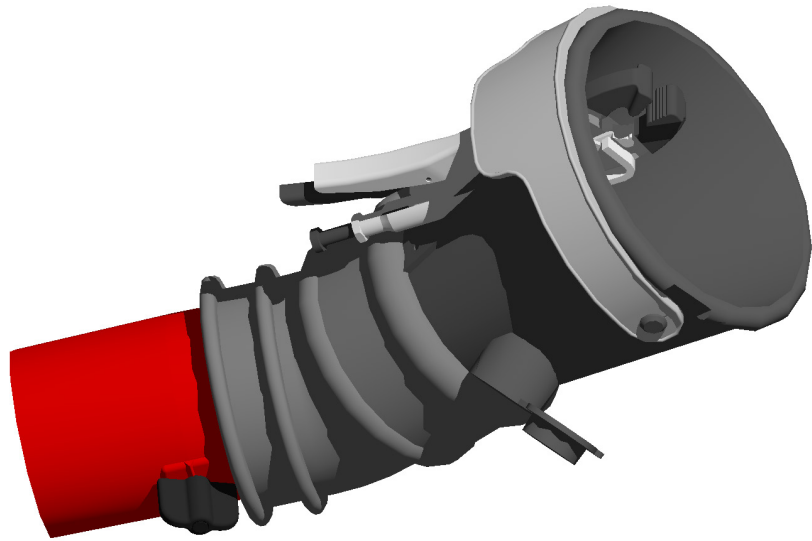
	Ø1 mm	Ø2 mm			
GRNG-16075	160 mm	75	-	✓	-
GRNG-160100		100	✓	✓	-
GRNG-160125		125	-	✓	-
GRNGM-16075	160 mm	75	-	✓	✓
GRNGM-160100		100	✓	✓	✓
GRNGM-160125		125	-	✓	✓


Materials


Rubber NBR - 80 shore


polypropylene reinforced with glass fiber


additional metal plates in correspondence with the gripper or clip





 Bocchetta in gomma con ingresso per sonda C.O., maniglia in silicone e pinza grip con rostri coperti da gomma vulcanizzata, ralla curva

 Rubber nozzle with opening with intake for C.O. probe, silicon handle, gripper with clamps covered by vulcanized rubber and bent rubber swivel

 Entonnoir en caoutchouc avec ouverture pour sonde CO, prise en silicone et pince étau recouverte en caoutchouc vulcanisé. Rotule pour rotation dans le coude.

 Gummित्रichter mit Öffnung für AU Sonde, Griff und Klemmzange mit Gummi-Abdeckung und gebogenem Gummi-Drehgelenk.

 Boquerel en goma con ingreso para sonda C.O., agarradera de silicona, pinza cubierta de goma, rodamiento curvado

	Ø1 mm	Ø2 mm				
GRNGM-16075	160 mm	75	-	✓	✓	-
GRNGM-160100		100	✓	✓	✓	-
GRNGM-160125		125	-	✓	✓	-
GRNGMC-16075	160 mm	75	-	✓	✓	✓
GRNGMC-160100		100	✓	✓	✓	✓
GRNGMC-160125		125	-	✓	✓	✓

Materials

Rubber NBR - 80 shore

polypropylene reinforced with glass fiber


additional metal plates in correspondence with the gripper or clip

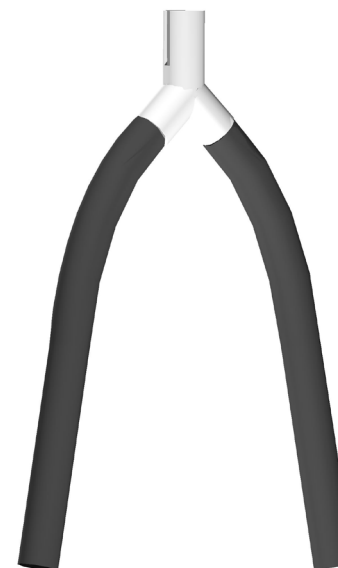
RESUME


	Ø1 mm	Ø2 mm						
GRN-16075	160 mm	75	-	-	-	-	-	-
GRN-160100		100	✓	-	-	-	-	-
GRN-160125		125	-	-	-	-	-	-
GRNT-16075	160 mm	75	-	✓	-	-	-	-
GRNT-160100		100	✓	✓	-	-	-	-
GRNT-160125		125	-	✓	-	-	-	-
GRNK-16075	160 mm	75	-	-	✓	-	-	-
GRNK-160100		100	✓	-	✓	-	-	-
GRNK-160125		125	-	-	✓	-	-	-
GRNTM-16075	160 mm	75	-	✓	-	-	✓	-
GRNTM-160100		100	✓	✓	-	-	✓	-
GRNTM-160125		125	-	✓	-	-	✓	-
GRNM-16075	160 mm	75	-	-	-	-	✓	-
GRNM-160100		100	✓	-	-	-	✓	-
GRNM-160125		125	-	-	-	-	✓	-
GRNKMC-16075	160 mm	75	-	-	✓	-	✓	✓
GRNKMC-160100		100	✓	-	✓	-	✓	✓
GRNKMC-160125		125	-	-	✓	-	✓	✓

	Ø1 mm	Ø2 mm						
GRNKM-16075	160 mm	75	-	-	✓	-	✓	-
GRNKM-160100		100	✓	-	✓	-	✓	-
GRNKM-160125		125	-	-	✓	-	✓	-
GRNG-16075	160 mm	75	-	-	-	✓	-	-
GRNG-160100		100	✓	-	-	✓	-	-
GRNG-160125		125	-	-	-	✓	-	-
GRNGM-16075	160 mm	75	-	-	-	✓	✓	-
GRNGM-160100		100	✓	-	-	✓	✓	-
GRNGM-160125		125	-	-	-	✓	✓	-
GRNGC-16075	160 mm	75	-	-	-	✓	-	✓
GRNGC-160100		100	✓	-	-	✓	-	✓
GRNGC-160125		125	-	-	-	✓	-	✓
GRNGMC-16075	160 mm	75	-	-	-	✓	✓	✓
GRNGMC-160100		100	✓	-	-	✓	✓	✓
GRNGMC-160125		125	-	-	-	✓	✓	✓



	Ø
GWB-100	75 - 100 mm
GWB-125	125 - 150 mm



	Ø
GYG-100100100	100 - 100 - 100 mm
GYG-1007575	100 - 75 - 75 mm



Mensola a muro per tubazione flessibile



Wall bracket for hose storage



Console murale pour tuyaux flexibles



Wandkonsole für Schläuche



Soporte a pared para mangueras



Deviazione a Y con attacco rapido alla bocchetta GRNG-160100 e completa di 2 spezzoni di tubo da 1,25 m ciascuno. Bocchette non incluse.



Y piece with quick coupling with nozzle model GRNG-160100 complete with 1,25 mt hose each side but without nozzles.



Ensemble pour aspiration sur pots d'échappement doubles, avec déviation à "Y", et 2 tuyaux flexibles de 1.25m chaque. Sans entonnoirs mais avec raccord rapide avec l'entonnoir GRNG-160100.



Trichter für Doppelauspuffrohre mit Schnellkupplung mit GRNG-160100 Trichter, komplett mit 2 Schläuche 1,25 m je.



Desvío en Y con enganche rapido al boquerel GRNG-160100 y completo de 1,25 m de manguera cada lado.

GY

GYB

WORKY






GY-757575
GY-1007575
GY-100100100
GY-125100100
GY-150125125



GYB-757575
GYB-1007575
GYB-100100100
GYB-125100100


 Deviazione a Y completa di 2 spezzoni di tubo da 1,25 m ciascuno


 Y piece complete with 1,25 mt hose each side without nozzles


 Ensemble pour aspiration sur pots d'échappement doubles, avec déviation à "Y", et 2 longueurs de tuyau flexible de 1.25m. Sans entonnoirs.


 Trichter für Doppelauspuffrohre, komplett mit 2 Schläuche 1,25 m je


 Desvío en Y completo de 1,25 m de manguera cada lado

 Deviazione a Y completa di 2 spezzoni di tubo da 1,25 m ciascuno e curvette in gomma GNTB

 Y piece complete with 1,25 mt hose each side and GNTB rubber nozzles


 Ensemble pour aspiration sur pots d'échappement doubles, avec déviation à "Y", 2 longueurs de 1.25m de flexible et entonnoirs GNTB


 Trichter für Doppelauspuffrohre, komplett mit 2 Schläuche 1,25 m je und GNTB Verbindungshulse je


 Desvío en Y completo de 1,25 m de manguera cada lado y manguitos GNTB






GYN-757575
GYN-1007575
GYN-100100100
GYN-125100100

 Deviazione a Y completa di 2 spezzoni di tubo da 1,25 m ciascuno e bocchette in gomma modello GRN


 Y piece complete with 1,25 mt hose each side and two rubber nozzles model GRN.


 Ensemble pour aspiration sur pots d'échappement doubles, avec déviation à "Y", 2 tuyaux flexibles de 1.25m, et 2 entonnoirs en caoutchouc du type GRN.


 Trichter für Doppelauspuffrohre, komplett mit 2 Schläuche 1,25 m je und GRN Gummitrichtern.


 Desvío en Y completo de 1,25 m de manguera por cada lado y boqueroles en goma GRN.





GYNMA-1007575
GYNMA-100100100

 Doppia bocchetta in gomma GRN con tubi flessibili e Y montata su carrello con staffa di supporto dotata di bracci pluri-regolabili indipendenti.

 Trolley mounted double rubber nozzle GRN with hose and Y piece mounted on adjustable stand with independently adjustable arms.


 Chariot pour aspiration sur pots d'échappement doubles, avec déviation à "Y", 2 longueurs de tuyau flexible de 1.25m, et 2 entonnoirs en caoutchouc du type GRN.

 Wagenmontiert GRN Gummitrichter für Doppelauspuffrohre mit Stativ un regulierbarer Ärme.


 Carrito con doble boquerel en goma GRN con mangueras y desvío montado sobre soporte multi-regulable.

GRNP






GRNP-75
GRNP-100
GRNP-125
GRNP-150

 Bocchetta in gomma con piedistallo

 Rubber nozzle with stand

 Entonnoir en caoutchouc avec pied de support

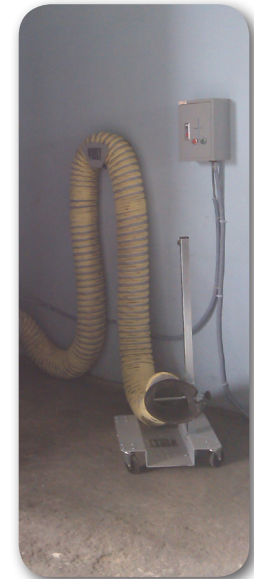
 Gummitrichter mit Stativ


 Boquerel en goma con soporte


GRNP HT





GRNP-100HT
GRNP-150HT




 Bocchetta carrellata in inox per prova opacimetrica e alte temperature


 Trolley mounted stainless steel nozzle for high temperature emission tests.

 Entonnoir INOX sur chariot pour hautes temperatures


 Wagenmontierte Edelstahltrichter für Hochtemperatur

 Boquerel para alta temperatura con carro y pedestal






GNTB-75
GNTB-100




 Manicotto curvo in gomma per collegamento bocchette serie GNTN



 Rubber cowling bend for connecting rubber nozzles series GNTN

 Entonnoir en caoutchouc spéciale, coudé à 60°, à utiliser seul ou accolé avec les entonnoirs de la série GNTN.


 60° Sondertrichter; allein oder in Verbindung mit GNTN Reihe zu benutzen.


 Manguito en goma para la conexión de boquereles serie GNTN





	∅
GNTN-80160	
GNTN-80160-75	75 mm
GNTN-80160-100	100 mm



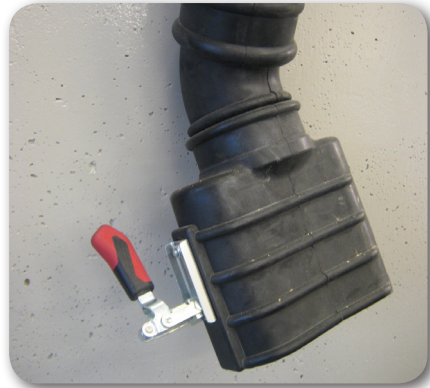
 Bocchetta ovale 80 X 160 con pinza da collegare con il manicotto GNTB o direttamente al tubo flessibile.



 Oval rubber nozzle 80 x 160 with gripper to be connected with cowling GNTB or directly to the flexible hose.


 Entonnoir ovale 80 X 160 en caoutchouc avec fixation par pince étai. A utiliser avec l'entonnoir coudé GNTB ou directement au flexible.


 Gummitrichter 80 x 160 mit Klemmzange. In Verbindung mit GNTB oder direkt am flexibler Schlauch zu benutzen.


 Boquerel oval 80 x 160 en goma con pinza para conectarse con el manguito GNTB o directamente à la manguera.





	Ø
GNTN-80210	
GNTN-80210-75	75 mm
GNTN-80210-100	100 mm

 Bocchetta ovale 80 X 210 con pinza da collegare con il manicotto GNTB o direttamente al tubo flessibile.


 Oval rubber nozzle 80 x 210 with gripper to be connected with cowling GNTB or directly to the flexible hose.


 Entonnoir ovale 80 X 210 en caoutchouc avec fixation par pince étau. A utiliser avec l'entonnoir coudé GNTB ou directement au flexible.


 Gummitrichter 80 x 210 mit Klemmzange. In Verbindung mit GNTB oder direkt am flexibler Schlauch zu benutzen.


 Boquerel oval 80 x 210 en goma con pinza para conectarse con el manguito GNTB o directamente à la manguera.





	Ø
GNTN-90260	
GNTN-90260-75	75 mm
GNTN-90260-100	100 mm

 Bocchetta ovale 90 X 260 con pinza da collegare con il manicotto GNTB o direttamente al tubo flessibile.

 Oval rubber nozzle 90 X 260 with gripper to be connected with cowling GNTB

 Entonnoir oval 90 X 260 en caoutchouc avec pince à raccorder avec le manchon GNTB ou directement au flexible.


 Gummitrichter 90 x 260 mit Klemmzange. In Verbindung mit GNTB oder direkt am flexibler Schlauch zu benutzen.


 Boquerel oval 90 X 260 en goma con pinza para conectarse con el manguito GNTB o directamente à la manguera.






GNTN-80210IG
GNTN-80210IG-75
GNTN-80210IG-100



GNTN-90260IG
GNTN-90260IG-75
GNTN-90260IG-100


 Bocchetta ovale da 80 x 210 con pinza interna. Adatta al collegamento con il manicotto GNTB o direttamente con il tubo flessibile.


 Oval rubber nozzle 80 x 210 with internal gripper to be connected with cowl- ing GNTB or directly to the flexible hose.


 Entonnoir ovale 80 X 210 en caoutchouc avec fixation par pince interne. A utiliser avec l'entonnoir coudé GNTB ou directement avec le flexible.


 Gummitrichter 80 x 210 mit innere-Klemmzange. In Verbindung mit GNTB oder direkt am flexibler Schlauch zu benutzen.


 Boquerel oval 80 x 210 en goma con pinza interna, para conectarse con el manguito GNTB o directamente a la man- guera.

 Bocchetta ovale da 90 x 260 con pinza interna. Adatta al collegamento con il manicotto GNTB o direttamente con il tubo flessibile.

 Oval rubber nozzle 90 x 260 with internal gripper to be connected with cowl- ing GNTB or directly to the flexible hose.

 Entonnoir ovale 90 x 260 en caoutchouc avec pince interne. A utiliser avec l'entonnoir coudé GNTB ou directement avec le flexible.


 Gummitrichter 90 x 260 mit innere-Klemmzange. In Verbind- ung mit GNTB oder direkt am flexibler Schlauch zu benutzen.


 Boquerel oval 90 x 260 en goma con pinza interna, para conectarse con el manguito GNTB o directamente a la manguera.


GRN235




 123456
GRN235100
GRN235125
GRN235150

 Bocchetta ovale in 185 X 235 mm in gomma pesante

 Oval heavy rubber nozzle 185 x 235 mm

 Entonnoir ovale en caoutchouc. Dimensions de l'ouverture: 185 x 235 mm.

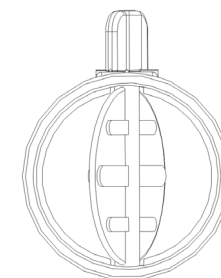
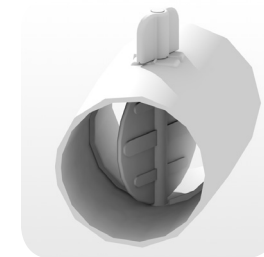
 Ovaler Gummitrichter 185 x 235 mm


 Boquerel oval 185 x 235 en goma pesada.


GV100





 123456
GV100




 Tronchetto diam 100 in materiale plastico resistente fino a 200°C dotato di serranda a farfalla e griglia anti intrusione

 Plastic cowling diam 100 mm resistant up to 200°C equipped with butterfly valve and safety net.

 Manchon en plastique diam. 100mm résistants jusqu'à 200°C, équipé avec registre de fermeture et grille stop-chiffon.


 Kunststoffhülse DN 100 mm Temperaturbeständig bis 200°C ausgestattet mit Absperrklappe und Schutzgitter


 Manguito en plastico de diametro 100 resistente hasta 200°C de temperatura con tapa de cierre y rejilla anti-intrusión


GRNGHD






GRNG-75HD
GRNG-100HD
GRNG-125HD
GRNG-150HD
GRNG-200HD

 Bocchetta ovale in 185 X 235 in gomma con pinza

 Oval rubber nozzle 185 x 235 with gripper

 Entonnoir oval 185 x 235 en caoutchouc avec pince


 Ovaler Gummitrichter 185 x 235 mit Zange


 Boquerel oval 185 x 235 en goma con pinza


GRNAD






GRNAD-125
GRNAD-150
GRNAD-200

 Bocchetta ovale in gomma da 185 X 235 mm con pinza per sgancio automatico

 Oval rubber nozzle 185 x 235 with gripper for automatic disconnection

 Entonnoir oval 185 x 235 en caoutchouc avec pince pour décrochage automatique


 Ovaler Gummitrichter 185 x 235 mit Zange für automatische Ablosung


 Boquerel oval 185 x 235 en goma con pinza para desenganche automático






GRNMHD-125
GRNMHD-150
GRNMHD-200





GRNIG-125
GRNIG-150
GRNIG-200


 Bocchetta ovale in gomma da 185 X 235 mm con magneti


 Oval rubber nozzle 185 x 235 with magnets


 Entonnoir ovale en caoutchouc avec fixation par aimant. Dimensions de l'ouverture: 185 x 235 mm.

 Ovaler Gummitrichter 185 x 235 mit Magnet


 Boquerel oval 185 x 235 en goma con ímanes

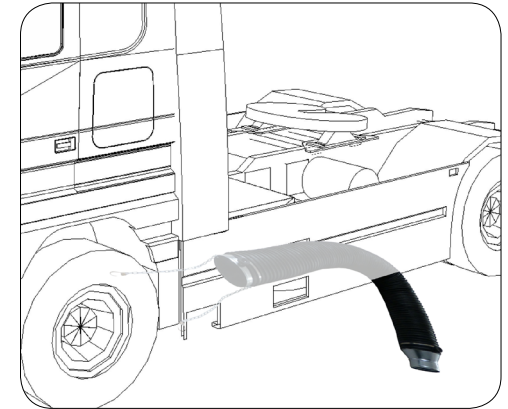
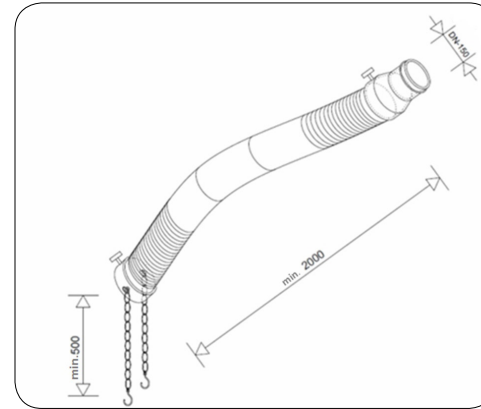
 Bocchetta ovale in gomma da 185 X 235 mm con pinza ad aggrappaggio interno

 Oval rubber nozzle 185 x 235 with internal gripper

 Entonnoir en caoutchouc 185 X 235 avec fixation par pince interne.

 Ovaler Gummitrichter 185 x 235 mit Innenzange

 Boquerel oval 185 x 235 en goma con pinza interna



Bocchetta flessibile per captare i gas di scarico dei veicoli industriali MERCEDES EURO 6 con scarico centrale.



Special flexible nozzle for exhaust extraction from MERCEDES industrial vehicles EURO 6 with central exhaust outlet.



Entonnoir en acier pour l'aspiration des gaz d'échappement des MERCEDES EURO 6 poids lourds avec sortie centrale.

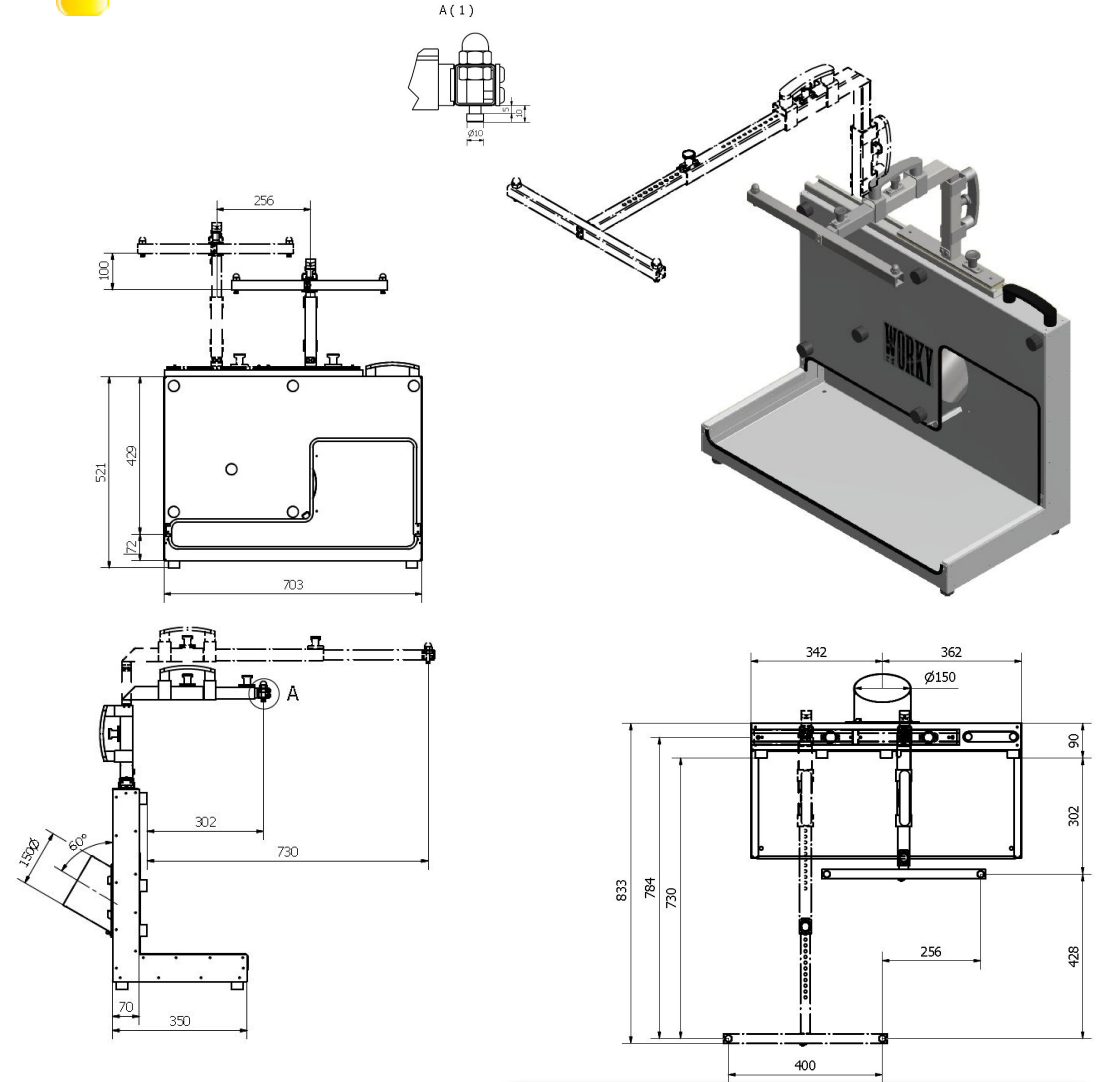
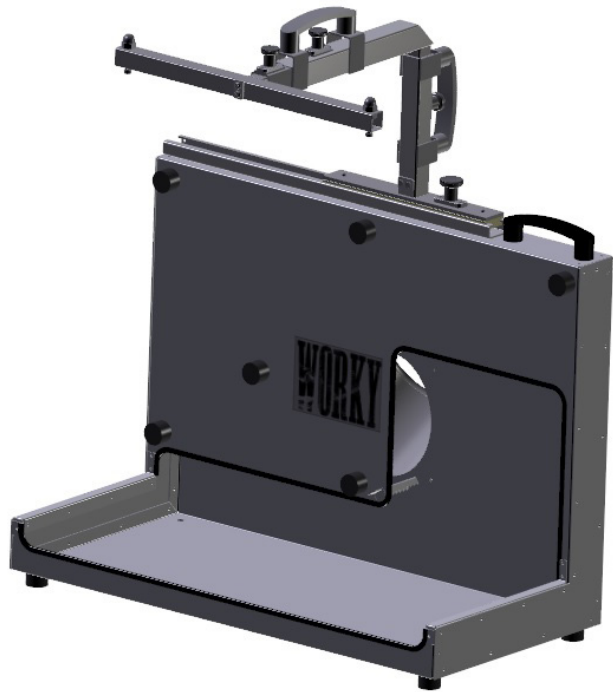


Stahltrichter für MERCEDES EURO 6 LKW mit zentrale Auspuff.



Boquerel en metal para vehiculos pesados MERCEDES EURO 6 con escape central.





Bocchetta in acciaio per captare i gas di scarico dei veicoli industriali MERCEDES EURO 6 e autobus.



Steel special nozzle for exhaust extraction from MERCEDES industrial vehicles EURO 6 and buses.



Entonnoir en acier pour l'aspiration des gaz d'échappement des MERCEDES EURO 6 poids lourds et autobus.



Stahltrichter für MERCEDES EURO 6 LKW und Bus.



Boquerel en metal para vehiculos pesados MERCEDES EURO 6 y autobuses.

Engineered & Designed by

