

TECHNICAL SHEET

INDUSTRIAL VACUUM ECOBULL M Z2-Z22 I13D

ATEX Z2-Z22

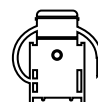
The **ECOBULL M Z2-Z22 industrial vacuum cleaner** is equipped with an **ATEX-certified side channel blower**, ideal for **continuous work** without the need for maintenance. Inside the **vacuum cleaner**, there is a large surface filter in **antistatic polyester** (24,000 cm²), **M class** certified with a **filtration efficiency** of 1 micron, ideal for **working with electrostatically charged powders**. The unit can be equipped with an **absolute filter H14** on request when it is necessary to **vacuum very fine dust**. A large **65 or 100 Lt container in AISI 304 stainless steel**, with the release on wheels, allows you to **easily collect and empty the vacuumed material**. On request, it is also possible to install an **automatic filter cleaning system** to keep the filter always clean and performing.



POWER
1,8 kW



SURFACE
24.000 cm²



CAPACITY
65/100 Lt



SUCTION UNIT

The suction unit is an ATEX certified side channel blower with direct coupling between motor and impeller. Furthermore, to guarantee safe work, the unit is equipped with a safety valve which, in the event of obstruction in the vacuuming elements, prevents overheating.



FILTERING ELEMENT

The filtration is guaranteed by an M class polyester filter. The star shape enables air to flow through the filter even when it is dirty. The fabric of the filter is classified as M Class (BIA | EN 60335-2-69). This means that all particles till 1 micron are stopped by the filter so as to protect the blower and the operator around the vacuum cleaner.



FILTER SHAKER

On one side of the filter chamber there is an ergonomic manual shaker through which the operator can easily and quickly clean the filter, removing any dust and debris from its surface. Thanks to this smart cleaning system the operator can carry on working without needing to change or wash the filter.



COLLECTION BIN

The vacuumed material is collected in an AISI 304 stainless steel container, equipped with a metal handle that enables the bin to be detached from the machine, to avoid any spark that could be generated by the electrostatic charge. Thanks to the 4 sturdy pivoting wheels, the bin can be moved very easily to then dispose of the collected material. Each wheel is reinforced to guarantee maximum stability during handling.

TECHNICAL DATA

ENGINE		PRIMARY FILTER		MACHINE	
Suction type	side channel blower	Type	star filter	Inlet	70 Ø mm
ATEX Marking	II 3GD Ex tD IIB T135°C IP55 Dc	Class EN 60335-2-69	M Class	Dimensions	660 x 800 mm
Voltage	230 V	Media	antistatic polyester	Height	1630
IP	55	Filter cleaning	manual shaker	Weight	95 Kg
Maximum vacuum	230 mBar				
Vacuum in continuous run	180 mBar				
Maximum air flow	280 m3/h				
Safety valve	included				
Noise level - (EN ISO 3744)	72 dB(A)				
Frequency	50/60 Hz				
Power	2,4 HP				
Insulation class	F				

OPTIONS



AVAILABLE FILTER CLEANING SYSTEMS



SP

Automatic reverse jet cleaning system Antistatic M class filter (EN 60335-2-69), 3 Polyester filter cartridges, 9 m² filter surface

OPTIONS



AVAILABLE FILTER MEDIA



PTFE ANT

Antistatic PTFE filter (M class EN 60335-2-69)



HEPA 14

Absolute filter (EN 1822) 28.000 cm² filter surface
H14 Class Filter (EN 1822)
Glass fiber

OPTIONS

STRUCTURE AND OPTIONS



100 LT
100 Lt bin



AB
Accessories basket



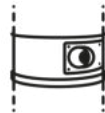
BX
Stainless steel bin AISI 304



GX
Stainless steel bin and chamber AISI 304



TX
Stainless steel bin, chamber and frame AISI 304



TAN
Tangential inlet + cyclone

ACCESSORY



P10866
Iron reducer \varnothing 70/50mm
Reducer for vacuum quick fitting in galvanised steel 70/50 mm diameter



P12378
ATEX starter kit \varnothing 50mm
Basic kit containing antistatic accessories for application with 50 mm diameter ATEX vacuum cleaner



P12377
ATEX kit PRO \varnothing 50mm
Kit containing antistatic accessories for application with 50 mm diameter ATEX vacuum cleaner